

Kansas City – TruPark

Address: 11530 NW Prairie View Rd,
Kansas City, MO

Labor Affiliation

- RCS
- Contact info:

KCRCSDA@rcstran.com

816-491-3172

Max Vehicle Capacity:

- 790
- Convoy Accessible: Yes

Yard procedures:

- 24/7
- Quality – sign off needed for severity 3+ greater
- Keys are at the gate
- Leave paperwork with guard at gate



Kansas City – Kimball

Address: 4100 N Kimball Dr, Kansas City, MO 64161

Labor Affiliation

- RCS
- Contact info:
KCRCSDA@rcstran.com
816-491-3172

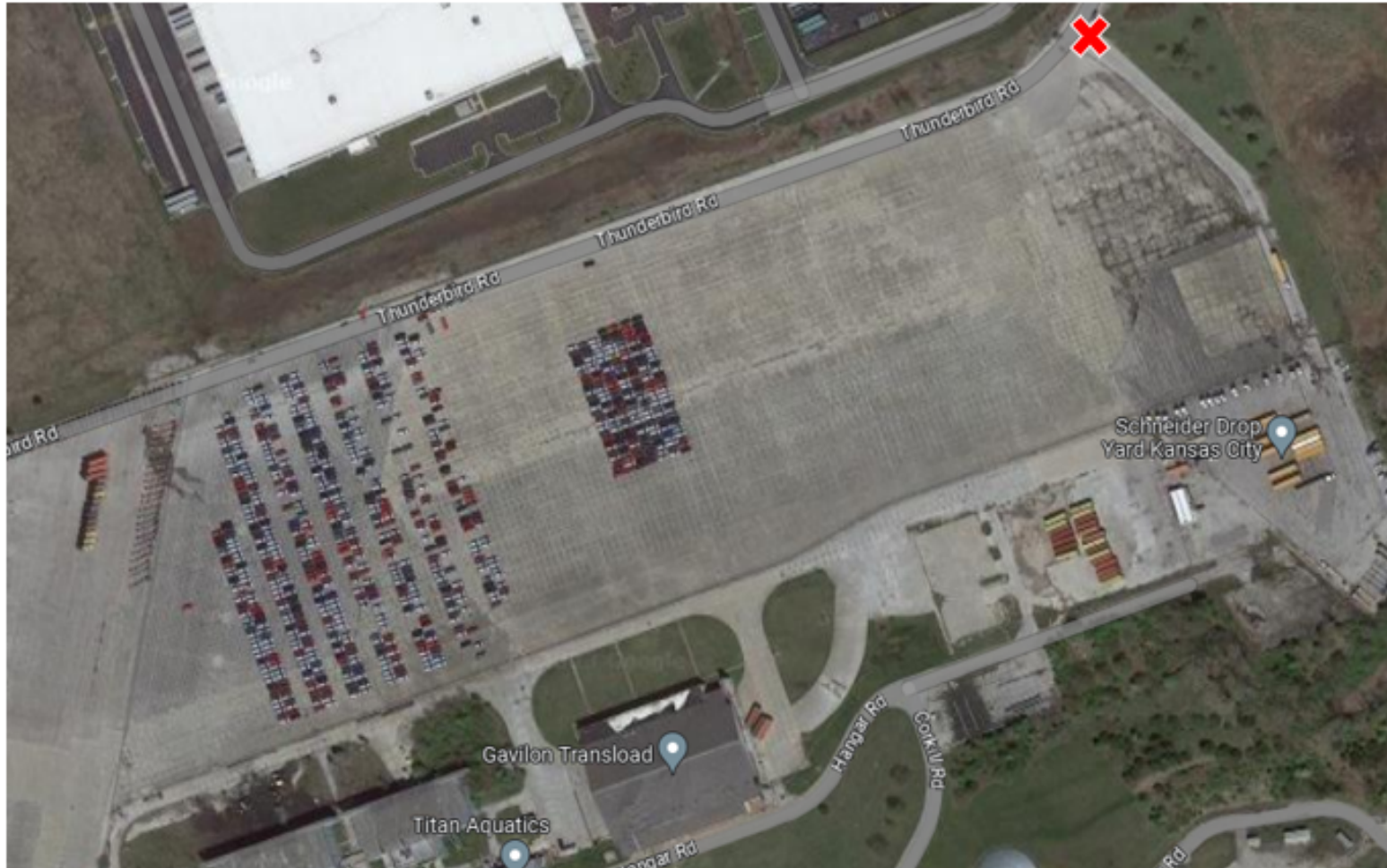
Max Vehicle Capacity:

- 550
- Convoy Accessible: Yes

Yard procedures:

- 24/7
- Quality – sign off needed for severity 3+ greater
- Keys are at the gate
- Leave paperwork with guard at gate





Kansas City – Richards Gebauer

Address: X

Labor Affiliation

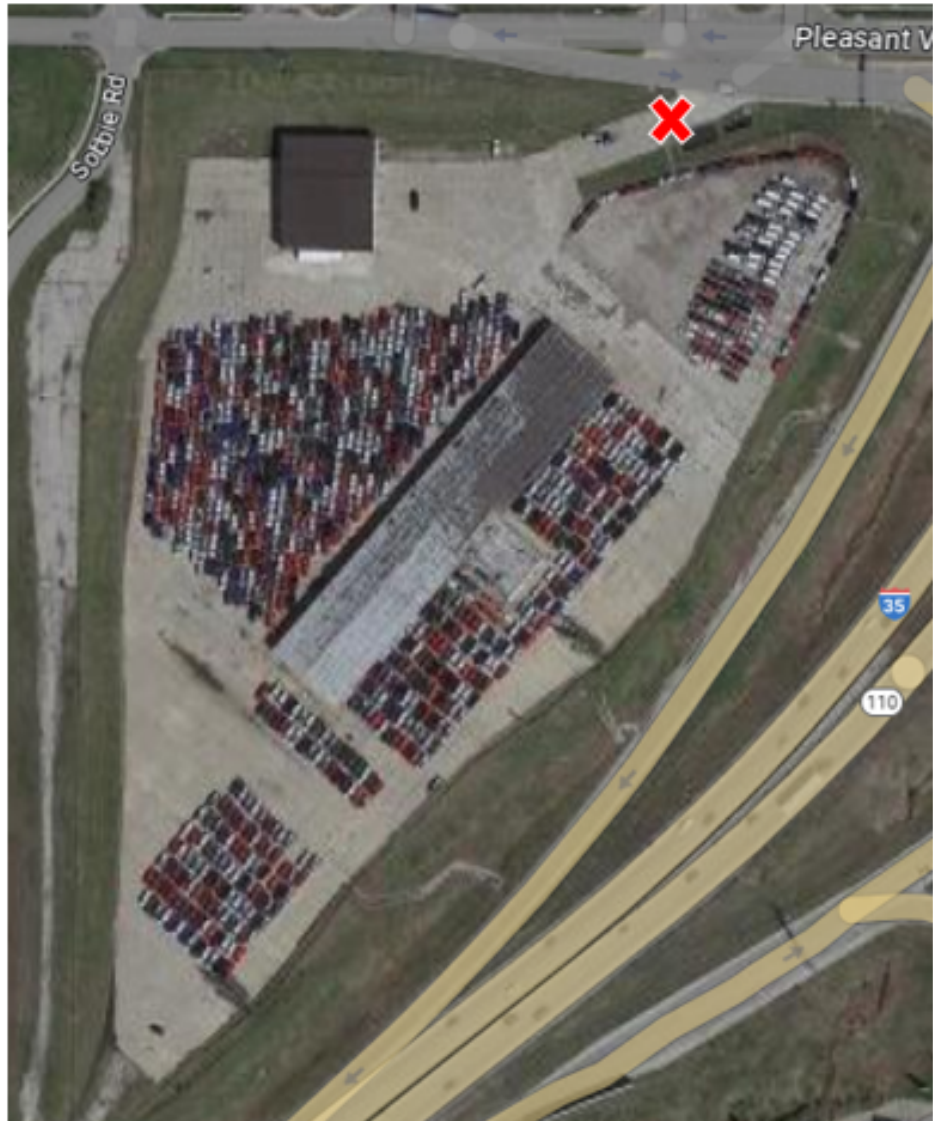
- RCS
- Contact info:
KCRCSDA@rcstran.com
816-491-3172

Max Vehicle Capacity:

- 3300
- Convoy Accessible: Yes

Yard procedures:

- 24/7
- Quality – sign off needed for severity 3+ greater
- Keys are at the gate
- Leave paperwork with guard at gate



Kansas City – R&L

Address: 8601 Pleasant Valley RD,
Pleasant Valley, MO 64068

Labor Affiliation

- RCS
- Contact info:
KCRCSDA@rcstran.com
816-491-3172

Max Vehicle Capacity:

- 1100
- Convoy Accessible: Yes

Yard procedures:

- 24/7
- Quality – sign off needed for severity 3+ greater
- Keys are at the gate
- Leave paperwork with guard at gate

Kansas City – Leeds

Address: 6817 Stadium Dr, Kansas City, MO 64129

Labor Affiliation

- Jack Cooper
- Contact Mark Berryman
 - Mark Berryman mberryman@jackcooper.com

Max Vehicle Capacity:

- 6000
- Convoy Accessible: Yes (*Not accessible when wet)

Yard procedures:

- Please note that there is a railroad overpass with a posted **13 feet 8 inch clearance** on Stadium Drive.
- 24/7 – preferred daylight hours 7a -4p
- Loads need to be sent the day prior to allow timing for Cooper to get keys bagged up
- Quality – sign off needed for severity 3+ greater
- Leave paperwork with guard at gate



**Kansas City- Enterprise
8800 NE Parvin RD
Kansas City MO 64161**



Labor Affiliation

- RCS
- Contact: Scott Davenport
sdavenport@valiantmh.com

Yard procedures:

- 24/7
- Quality – sign off needed for severity 3+ greater
- Leave paperwork with guard at gate



Kansas City – Blue Parkway

Address: 13000 E State Rte 350,
Kansas City, MO 64138

Labor Affiliation

- RCS
- Contact: Scott Davenport
sdavenport@valiantmh.com

Max Vehicle Capacity:

- 2200
- Convoy Accessible: Yes (*Not accessible when wet)

Yard procedures:

- 24/7
- Quality – sign off needed for severity 3+ greater
- Keys are at the gate
- Leave paperwork with guard at gate



Kansas City – Kansas Ave.

Address: 6007 Kansas Ave., Kansas City, KS 66111

Labor Affiliation

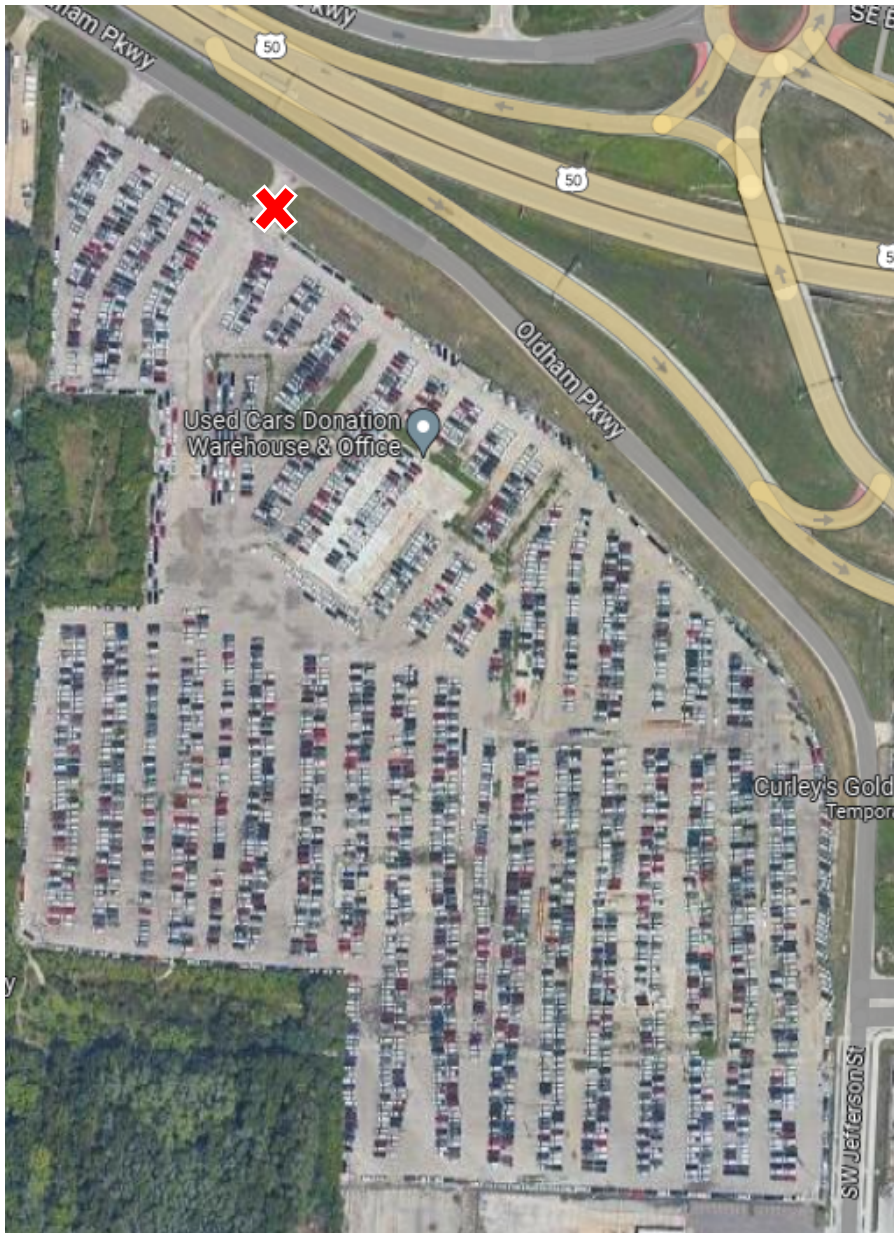
- RCS – Scott Davenport
- sdavenport@valiantmh.com

Max Vehicle Capacity:

- 1600
- Convoy Accessible: Y

Yard procedures:

- 24/7
- Quality – sign off needed for severity 3+ greater
- Keys are at the gate
- Leave paperwork with guard at gate



Kansas City – Lee's Summit

Address: 101 SW Oldham Parkway
Lee's Summit, MO

Labor Affiliation

- RCS
- Contact: Scott Davenport
- sdavenport@valiantmh.com

Max Vehicle Capacity:

- 3400
- Convoy Accessible: Yes

Yard procedures:

- 24/7
- Quality – sign off needed for severity 3+ greater
- Keys are at the gate
- Leave paperwork with guard at gate

Kansas City – Arrowhead

Address: 1 Arrowhead Dr, Kansas City, MO 64129



Labor Affiliation

- RCS
- Contact info:
KCRCSDA@rcstran.com
816-491-3172

Max Vehicle Capacity:

- 800
- Convoy Accessible: Yes

Yard procedures:

- 24/7
- Quality – sign off needed for severity 3+ greater
- Keys are at the gate
- Leave paperwork with guard at gate

AIAG DAMAGE CODES

AIAG DAMAGE AREA CODES – First and Second Digits

DAMAGE AREA CODES					
01	ANTENNA / ANTENNA BASE	34	TV / DVD SCREEN	67	CIGARETTE LIGHTER / ASH TRAY
02	BATTERY / BOX	35	ROCKER PANEL / OUTER SILL - LEFT	68	CARPET – FRONT
03	BUMPER / COVER / EXTERIOR - FRONT	36	ROCKER PANEL / OUTER SILL - RIGHT	69	CENTER POST – RIGHT
04	BUMPER / COVER / EXTERIOR - REAR	37	ROOF	70	CENTER POST – LEFT
05	BUMPER GUARD / STRIP - FRONT	38	RUNNING BOARD / STEP - LEFT	71	CORNER POST
06	BUMPER GUARD / STRIP - REAR	39	RUNNING BOARD / STEP - RIGHT	72	LEFT FRONT TIRE
07	DOOR - BACK CARGO - RIGHT	40	SPARE TIRE / WHEEL	73	LEFT FRONT WHEEL / RIM
08	DOOR - BACK CARGO - LEFT	41	OPEN	74	LEFT REAR TIRE
09	DOOR - CARGO - RIGHT	42	SPLASH PANEL / SPOILER - FRONT	75	LEFT REAR WHEEL / RIM
10	DOOR - LEFT FRONT	43	OPEN	76	RIGHT REAR TIRE
11	DOOR - LEFT REAR	44	GAS TANK	77	RIGHT REAR WHEEL / RIM
12	DOOR - RIGHT FRONT	45	TAIL LIGHT / HARDWARE	78	RIGHT FRONT TIRE
13	DOOR - RIGHT REAR	46	OPEN	79	RIGHT FRONT WHEEL / RIM
14	FENDER - LEFT FRONT	47	OPEN	80	COWL
15	QTR PANEL / PICK UP BOX - LEFT	48	TRIM PANEL - FRONT LEFT	81	GAS CAP / COVER
16	FENDER - RIGHT FRONT	49	CD CHANGER - SEPARATE UNIT	82	FENDER - REAR LEFT
17	QTR PANEL / PICK UP BOX - RIGHT	50	TRIM PANEL - FRONT RIGHT	83	FENDER - REAR RIGHT
18	FLOOR MATS - FRONT	51	OPEN	84	TOOLS / JACK / SPARE TIRE MOUNT & LOCK
19	FLOOR MATS - REAR	52	DECK LID / TAILGATE / HATCHBACK	85	COMMUNICATION / GPS UNIT
20	WINDSHIELD	53	SUNROOF / T-TOP	86	PARKING SONAR SYSTEM
21	GLASS - REAR	54	UNDERCARRIAGE - OTHER	87	OPEN
22	GRILLE	55	CARGO AREA - OTHER	88	OPEN
23	ACCESSORY BAG / BOX	56	VINYL / CONVERTIBLE TOP / TONNEAU COVER	89	TRAILER HITCH / WIRING HARNESS / TOW HOOKS
24	HEADLIGHT / COVER / TURN SIGNAL	57	WHEEL COVERS / CAPS / RINGS	90	FRAME
25	LAMPS - FOG / DRIVING / SPOT LIGHT	58	RADIO SPEAKERS	91	EXHAUST SYSTEM
26	HEADLINER	59	WIPERS - ALL	92	LICENSE PLATE BRACKET
27	HOOD	60	OPEN - SPECIAL USE CODE	93	STEERING WHEEL / AIRBAG
28	KEYS	61	PICK UP BOX - INTERIOR	94	SEAT - FRONT LEFT
29	KEYLESS REMOTE	62	OPEN	95	SEAT - FRONT RIGHT
30	MIRROR - OUTSIDE LEFT	63	RAILS, TRUCK BED / LIGHT BAR	96	SEAT - REAR
31	MIRROR - OUTSIDE RIGHT	64	SPOILER / DEFLECTOR - REAR	97	CARPET - REAR
32	OPEN	65	LUGGAGE RACK (STRIPS) / DRIP RAIL	98	INTERIOR - OTHER
33	AUDIO / VIDEO PLAYER	66	DASH / INSTRUMENT PANEL	99	ENGINE COMPARTMENT - OTHER

AIAG DAMAGE TYPE CODES – Third and Fourth Digits

DAMAGE TYPE CODES					
01	BENT	11	PUNCTURED	24	MARKER LIGHT / TURN LIGHT DAMAGE
02	BROKEN	12	SCRATCHED - EXCEPT GLASS	25	DECAL / PAINT STRIPE DAMAGED
03	CUT	13	TORN	29	CONTAMINATION - EXTERIOR
04	DENTED - PAINT BROKEN	14	DENTED - PAINT / CHROME NOT DAMAGED	30	FLUID SPILLAGE - EXTERIOR
05	CHIPPED - EXCEPT GLASS & PANEL EDGE	18	MOLDING / WEATHER STRIP / EMBLEM DAMAGED	34	PANEL EDGE CHIPPED
06	CRACKED - EXCEPT GLASS	19	MOLDING / WEATHER STRIP / EMBLEM MISSING	36	PART / OPTION NOT AS INVOICED
07	GOUGED	20	GLASS - CRACKED	37	HARDWARE EXTERIOR - DAMAGED
08	MISSING - EXCEPT MOLDING / EMBLEM	21	GLASS - BROKEN	38	HARDWARE EXTERIOR - LOOSE / MISSING
09	SCUFFED	22	GLASS - CHIPPED	39	JUMPED CHOCKS
10	INTERIOR STAINED / SOILED	23	GLASS - SCRATCHED		

AIAG DAMAGE SEVERITY CODES – Fifth Digit

DAMAGE SEVERITY CODES	
1	Damage up to and including 1 inch in length/diameter - less than 3 cm
2	Damage over 1 inch up to and including 3 inches in length/diameter - 3cm up to 8 cm
3	Damage over 3 inches up to and including 6 inches in length/diameter - over 8 cm up to 15 cm
4	Damage over 6 inches up to and including 12 inches in length/diameter - over 15 cm to 30 cm
5	Damage over 12 inches in length/diameter - over 30 cm
6	Missing

To All,

Pickup Yard hours are 24/7 Any questions, please contact Proficient dispatch at **Call 904-638-6368**

Driver will need a Yard Exit sheet as they will need to leave at the guard before being able to leave the yard.

Yard policy / rules are just like any other yard. Standard safety / etiquette. **Must have on high-visibility clothes in all yards, 15mph in yard, horns and flashers to be used at all times in yard**

Pickup and Gate Location see attachment

Driver will need to leave a yard exit copy at guard shack upon yard exit

Damage sign off and lost vehicles contact the yard, code and ship up to severity #2 a severity #3 requires a signature.

Can assist and confirm where the units should be parked if not in bay but sometimes driver will need to look a few parking spots around bay first.

Magnus App must be used for the movement of these units

Location Services must be turned on when using the Magnus App when doing these moves

Driver must mark pickup in Magnus App after driver has loaded and is still on lot at pickup

Driver must mark delivery in the Magnus App after driver has delivered and is still on lot at delivery

Yard policy / rules are just like any other yard. Standard safety / etiquette. **Must have on high-visibility clothes in all yards, drive within posted speeds in yard, horns and flashers to be used at all times in yard**

Driver will need to leave a yard exit copy at guard shack upon yard exit

Do an inspection and obtain signature as needed on your vehicles before moving from the bay. Please make sure all damage info is put into the Magnus App with Pictures and a signature is obtained before leaving the facility if it meets the requirements above for a signature.

Note damages on gate pass or manifest at time of Pickup. Always use Numerical AGIG M-22 codes. The Ramp will not acknowledge damages unless damage codes are used.

FOLLOW THE GUIDELINES BELOW.

-Verify the unit in bay is the unit on your load – double check vin numbers before touching the car.

There are many mis-bayed units and missing units.

-If a unit has damage that needs to be verified and no one is there to verify the damage DO NOT TAKE THE UNIT. Have it dropped from your load.

-The inspector will need to sign the paper gate pass. Once you are loaded, before you turn in your gate pass, SEND A PICTURE OF THE GATE PASS WITH VERIFYING SIGNATURE to claims@proautotran.com If you don't send it to us we have nothing to fight the claim with as the inspectors in the yard won't sign the Magnus app.

-The security guard is NOT an inspector.

-Use the Magnus system.

-Take pictures of all damages.

ALWAYS DOUBLE CHECK/MAKE SURE THE INSPECTOR IS USING THE CORRECT CODES AND IS CODING ALL THE DAMAGE NECESSARY. The responsibility is ultimately on you the driver.

Also if you deliver to an upfitter or Uhaul Location call ahead to get there delivery hrs once you get your BOL

Any vehicle missing or that need to be swapped out due to damage driver needs to go call Proficient dispatch at **Call 904-638-6368** the vehicle swapped out or removed from load.

Thank You,

